



Sir Winston Churchillaan 273
 NL-2288 EA Rijswijk
 Postbus 70
 NL-2280 AB Rijswijk
 Tel.: +31 (0)88 998 44 00
 Fax: +31 (0)88 998 44 20
 E-mail: info@kiwa.nl



European Technical Assessment

ETA 21/0066
of 12-02-2021

General Part

Technical Assessment Body issuing the ETA:	
Kiwa Nederland B.V., Sir Winston Churchillaan 273, 2288 EA Rijswijk, www.kiwa.nl	
Trade name of the construction product	Solarelement-Halter Schneefang- und Schneehaltesystem System-Solarhalter
Product family to which the construction product belongs	Three-dimensional nailing plates
Manufacturer	CREATON GmbH Dillinger Str. 60 D - 86637 Wertingen
Manufacturing plant(s)	CREATON GmbH Dillinger Str. 60 D - 86637 Wertingen
This European Technical Assessment contains	39 pages including 2 annexes which form an integral part of this assessment
This European Technical Assessment is issued in accordance with Regulation (EU) No 305/2011, on the basis of	EAD 130186-00-0603

The European Technical Assessment is issued by the Technical Assessment Body in its official language. Translations of this European Technical Assessment in other languages shall fully correspond to the original issued document and should be identified as such.

Communication of this European Technical Assessment, including transmission by electronic means, shall be in full (excepted the confidential Annex(es) referred to above). However, partial reproduction may be made, with the written consent of the issuing Technical Assessment Body. Any partial reproduction has to be identified as such.

This European Technical Assessment may be withdrawn by the issuing Technical Assessment Body, in particular pursuant to information by the Commission according to Article 25 Paragraph 3 of Regulation (EU) No 305/2011.

Specific parts

1 Technical description of the product

The three-dimensional plates “Solarelement-Halter”, “Schneefang- und Schneehaltesystem“ and “System-Solarhalter” are systems used to fix solar panels or snow guard systems on wooden roof constructions.

The “Solarelement-Halter” and “Schneefang- und Schneehaltesystem“ are two-piece non-weld systems in which the connector to fix solar panels or snow guard systems is installed on a base element which is fixed on the wooden roof construction. The “System-Solarhalter” is a two-piece non-weld systems in which the connector to fix solar panels is installed directly on the wooden roof construction and covered by a base element which is also fixed on the wooden roof construction.

The “Solarelement-Halter” and “Schneefang- und Schneehaltesystem“ and the base element of the “System-Solarhalter” are produced of die-cast aluminium alloy EN AC-AISi12(Cu) according to EN 1706:2020 with minimum yield strength $R_{p0,2}$ of 80 N/mm² and minimum tensile strength R_m of 150 N/mm².

The base plate of the connector of the “System-Solarhalter” is produced of the aluminium alloy EN-AW 6063 T6 [AlMg0.7Si] with the mechanical properties minimum yield strength $R_{p0,2}$ of 170 N/mm² and minimum tensile strength R_m of 215 N/mm² according to EN 755-2:2016. The bracket of the connector of the “System-Solarhalter” is produced of the structural steel S235 according to EN 10025-2:2019 with minimum yield strength $R_{p0,2}$ of 235 N/mm² and minimum tensile strength R_m of 215 N/mm² and corrosion protection according to EN ISO 12944-5:2019 class C4 long.

Two countersunk head wood screw with drill point 5 x 60 mm of stainless steel A2 according to ETA 13/0816 and two countersunk head wood screw with drill point 6 x 120 mm (flat tiles), 6 x 100 mm (smooth tiles) or 6 x 80 mm (BIBER tiles) of stainless steel A2 according to ETA 11/0283 are used for the connection of the base element to the wooden roof construction.

Two pan washer head timber screws with cutting point 6 x 40/24 TX 25 of stainless steel A2 according to ETA 11/0283 are used for the connection of the connector from the “System-Solarhalter” to the wooden roof construction.

Other screws can be used, if they are equal to the mentioned above screws in dimensions, tensile strength, withdrawal parameter, yield moment and minimum spacing and distances.

Dimensions are shown in annex B.

2 Specification of the intended use(s) in accordance with the applicable European Assessment Document (hereinafter EAD)

The intended use of the “Solarelement-Halter”, “Schneefang- und Schneehaltesystem“ and “System-Solarhalter” is the fixing of solar panels or snow guard systems on wooden roof constructions, where requirements for mechanical resistance and stability in the sense of the Basic Work Requirement 1 and 4 of Regulation (EU) 305/2011 shall be fulfilled.

The roof brackets are for use in timber structures subject to the service classes 1, 2 and 3 of Eurocode 5 and for connections subject to static or quasi-static loading.

Annex A states the load carrying capacities of base elements for the load cases compression, tension and shear relative to the roof plane. The design of the connections shall be in accordance to Eurocode 5 or a similar national code.

The assessment methods on which this European Technical Assessment is based on lead to the assumption of a working life of concrete incorporating the Solarelement-Halter”, “Schneefang- und Schneehaltesystem“ and “System-Solarhalter” of at least 50 years. The indications given on the working life cannot be interpreted as a guarantee given by the producer, but are to be regarded only as a means for choosing the right products in relation to the expected economically reasonable working life of the works.

3 Performance of the product and references to the methods used for its assessment

3.1 Mechanical resistance and stability (BWR1)

3.1.1 Joint strength, joint stiffness and joint ductility

The characteristic load-carrying capacities are based on testing according to Section 2.2.1.4 of EAD 130186-00-0603.

The characteristic load bearing capacity is described in Annex A.

For the stiffness no performance was assessed.

For the ductility no performance was assessed.

The timber members

- shall be strength class C24 according to EN 338:2003 or better,
- shall be free from wane under the connector base element,
- shall be at least 30 mm thick and 160 mm wide for the base elements of “Solarelement-Halter”,
- shall be at least 30 mm thick and 120 mm wide for the connector of the “System-Solarhalter”.

The actual bending and end bearing capacity of the timber members to be used in conjunction with the roof tile bracket are to be checked by the designer of the structure to ensure they are not less than the capacity of the system and, if necessary, the capacity of the system shall be reduced accordingly. The fastener spacing, edge and end distances shall be chosen according to Eurocode 5. There are no specific requirements relating to preparation of the timber members.

3.1.2 Resistance to seismic actions

For the resistance to seismic actions no performance was assessed.

3.1.3 Resistance to corrosion and deterioration

The corrosion protection is given by the coating of the aluminium parts or construction steel of the brackets. The metal fasteners must also be of stainless steel A2 for the intended use in service class 3 or of zinc-coated steel for the intended use in service class 2 of EN 1995-1-1 (zinc coating Fe/Zn 12c according to EN ISO 2081:2018).

3.2 Safety in case of fire

3.2.1 Reaction to fire

The three-dimensional plates “Solarelement-Halter”, “Schneefang- und Schneehaltesystem“ and “System-Solarhalter” are of performance class A1 of the characteristic reaction to fire in accordance with the EC Decision 96/603/EC amended by EC Decision 2000/605/EC.

3.2.2 Resistance to fire

For the resistance to fire no performance was assessed.

4 Assessment and verification of constancy of performance (hereinafter AVCP) system applied, with reference to its legal base

In accordance with EAD 130186-00-0603 the applicable European legal act is: 1999/469/EC(EU).

The System to be applied is: 2+

5 Technical details necessary for the implementation of the AVCP system, as provided for in the applicable EAD

Technical details necessary for the implementation of the AVCP system are laid down in the control plan, in accordance with Section 3.2 of the EAD 130186-00-0603.

Issued in Rijswijk on 12-02-2021 by

A handwritten signature in black ink, appearing to read 'Ron Scheepers', is centered on the page.

Ron Scheepers
Kiwa Nederland B.V.

Annex A

Table 1 Specifications of the base elements and their characteristic compressive and tensile capacities in combination with “Solarelement-Halter”

Type	Dimensions in mm	Characteristic capacity in kN	
		Compression	Tension
BIBER	368 x 108 x 20	2.09	1.85
DOMINO	441 x 255 x 38	3.83	2.27
MIKADO	447 x 275 x 35.5		
SIMPLA	502 x 297 x 34.5		
VISIO	452 x 262 x 41		
BALANCE	502 x 323 x 66	2.60	3.35
MAGNUM	485 x 350 x 76		
MAXIMA PRO	397 x 329 x 56		
TITANIA	514 x 322 x 82		
FUTURA	482 x 300 x 81	2.77	3.09
MZ3	442 x 268 x 71.5		
PREMION	460 x 280 x 77		
SINFONIE	482 x 300 x 92.5		
HARMONIE	410 x 250 x 65	4.88	2.09
MELODIE	440 x 255 x 75		
MZ3 KLASSIK	422 x 255 x 67.5		
CANTUS	450 x 260 x 54		
ELEGANZ	420 x 230 x 49	3.96	2.26
HERZZIEGEL	420 x 230 x 49		
RAPIDO	506 x 321 x 52.5		
RATIO	446 x 265 x 49		
REGIUS	475 x 295 x 51		
RUSTICO	405 x 224 x 57.5		
TERRA OPTIMA	447 x 262 x 54.4		

Table 2 Characteristic shear capacities of the base elements

Type	Characteristic shear capacity in kN			
	SOLARELEMENT -HALTER	SCHNEEFANG- GITTERSTÜTZ E	RUNDHOLZ -STÜTZE	GEBIRGS- SCHNEEFANG
BIBER	1.95	2.93	2.56	1.79
DOMINO	1.29	1.61	1.35	2.54
MIKADO				
SIMPLA				
VISIO				
BALANCE	2.65	1.69	1.99	1.94
MAGNUM				
MAXIMA PRO				
TITANIA				
FUTURA	4.20	2.39	1.40	1.30
MZ3				
PREMION				
SINFONIE				
HARMONIE	2.59	2.04	1.96	2.90
MELODIE				
MZ3 KLASSIK				
CANTUS	2.67	2.32	1.73	3.48
ELEGANZ				
HERZZIEGEL				
RAPIDO				
RATIO				
REGIUS				
RUSTICO				
TERRA OPTIMA				

Table 3 Specifications of the connector of the “System-Solarhalter”

Type	Dimensions in mm	Characteristic capacity in kN		
		Compression	Tension	Shear
SOLARHALTER	264.7 x 93 x 205	1.19	1.24	0.83

Shear characteristics

The shear characteristics are parallel to the roof pitch in the same direction (from ridge to eaves).

Design values

As withdrawal failure is one of the failure modes, the design value shall be calculated according to EN 1995-1-1 by reducing the characteristic values of the load-carrying-capacity with a partial factor and multiplying with the modification factor k_{mod} .

The design value of the load bearing capacity is:

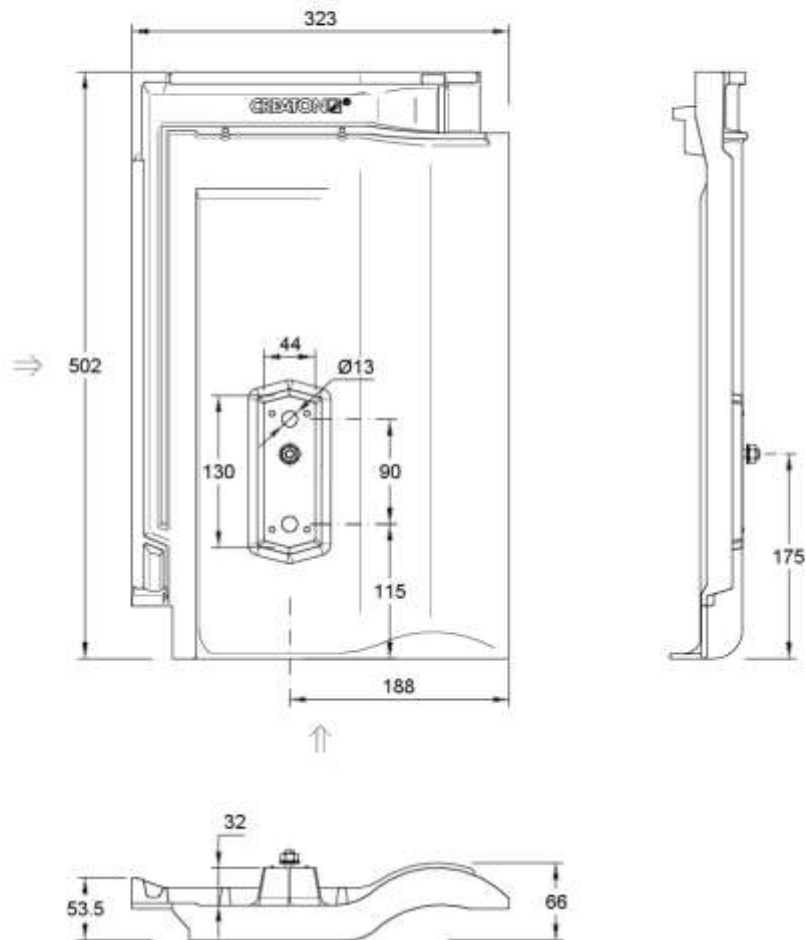
$$F_{Rd} = \frac{k_{mod} * F_{Rk}}{\gamma_m}$$


Combined forces

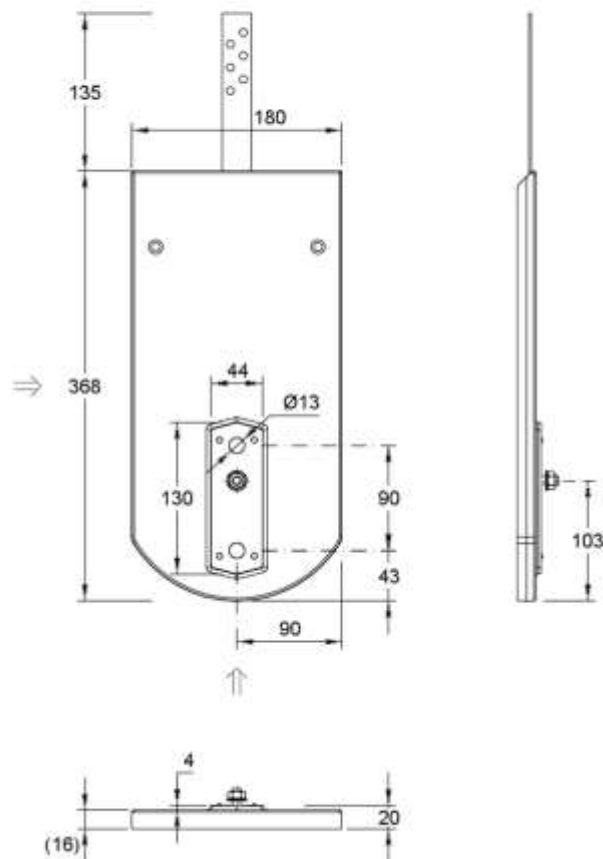
If the compression/tension and shear force act at the same time, the following inequality shall be fulfilled:

$$\sum \frac{F_{i,Ed}}{F_{i,Rd}} \leq 1$$

Annex B



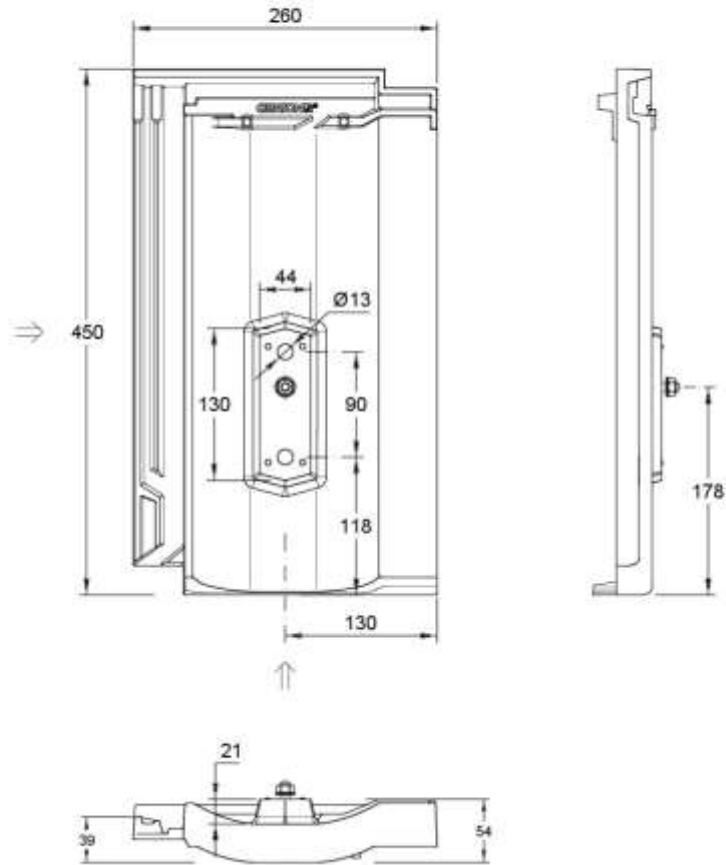
SCALE: 1:5	THIS DRAWING IS PROTECTED BY COPYRIGHT AND PROPERTY OF	
SIZE: DIN-A4		CREATON GmbH
DWG IN: mm		Dillinger Straße 60 D-86637 Wertingen
CREATED: 10.09.2020 Rb	AND MUST NOT BE COPIED OR DISCLOSED TO A THIRD PARTY WITHOUT PRIOR CONSENT OF THE OWNER	Diese Zeichnung ist urheberrechtlich geschützt und Eigentum der CREATON GmbH. Sie darf nicht ohne Zustimmung des Eigentümers kopiert oder an Dritte weitergegeben werden!
INDEX: -	TITLE: "BALANCE" ALU-GRUNDELEMENT	
Material: Alu-Guß, Legierung 231 K / EN AC-AI Si12 (Cu) Toleranzen: DIN1688 GTA 15		




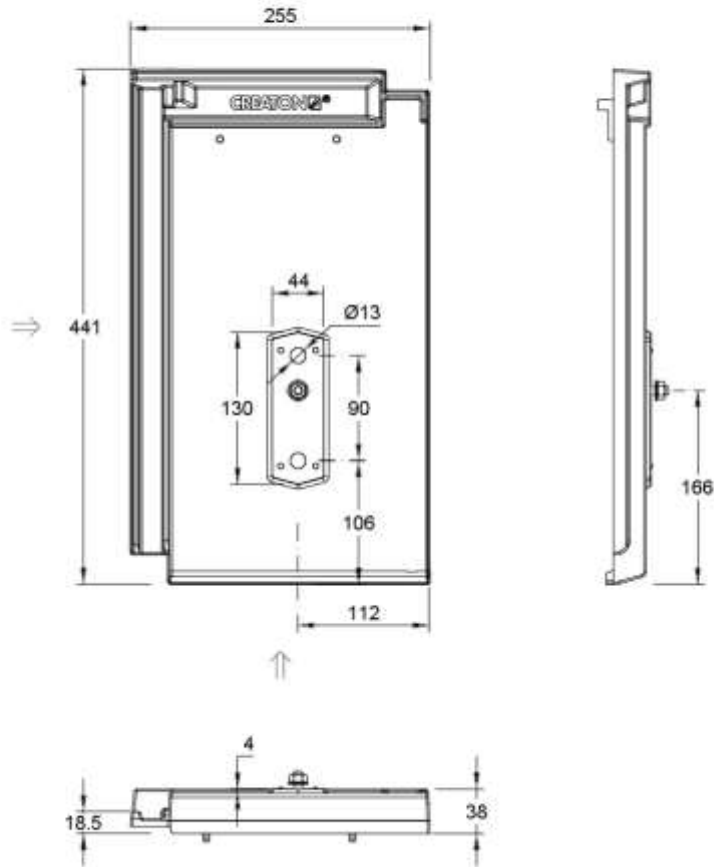
Einsetzbar für:


- KLASSIK Biber 18 x 38 cm
- AMBIENTE Biber 18 x 38 cm
- ANTIK Biber 18 x 38 cm
- SAKRAL Biber 18 x 38 cm
- PROFIL Biber 15,5 x 38 cm
- PROFIL Biber 16 x 38 cm

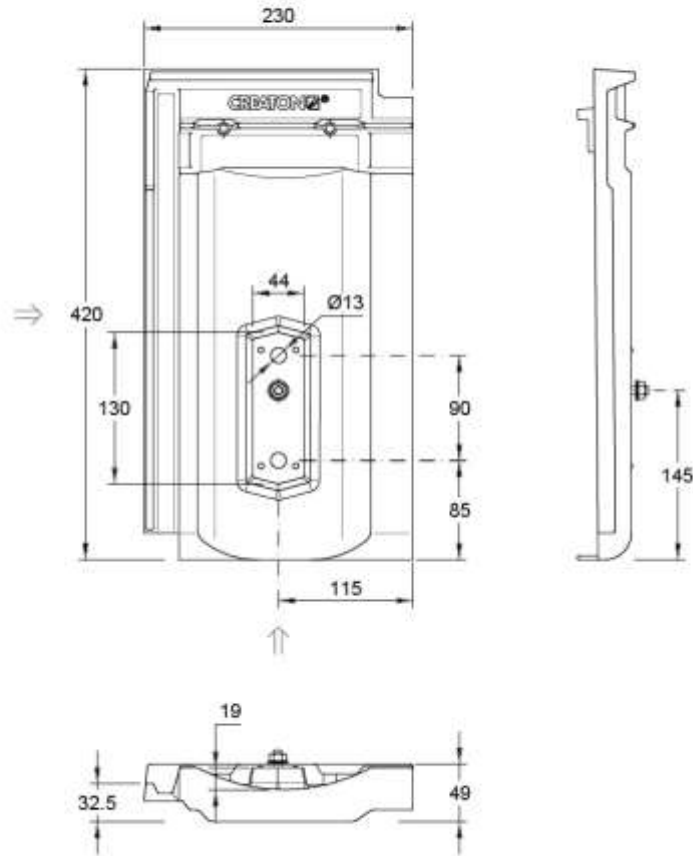
SCALE: 1:5	THIS DRAWING IS PROTECTED BY COPYRIGHT AND PROPERTY OF	
SIZE: DIN-A4	CREATON	CREATON GmbH Dillinger Straße 60 D-86637 Wertingen
DWG IN: mm		AND MUST NOT BE COPIED OR DISCLOSED TO A THIRD PARTY WITHOUT PRIOR CONSENT OF THE OWNER
CREATED: 10.09.2020 Rs	Diese Zeichnung ist urheberrechtlich geschützt und Eigentum der CREATON GmbH. Sie darf nicht ohne Zustimmung des Eigentümers kopiert oder an Dritte weitergegeben werden!	
INDEX: -	TITLE: "BIBER" ALU-GRUNDELEMENT	
Material: Alu-Guß, Legierung 231 K / EN AC-AI Si12 (Cu) Toleranzen: DIN1688 GTA 15 Band in Edelstahl 1.4016 (BIBER) Schraube und Mutter: A2-70		




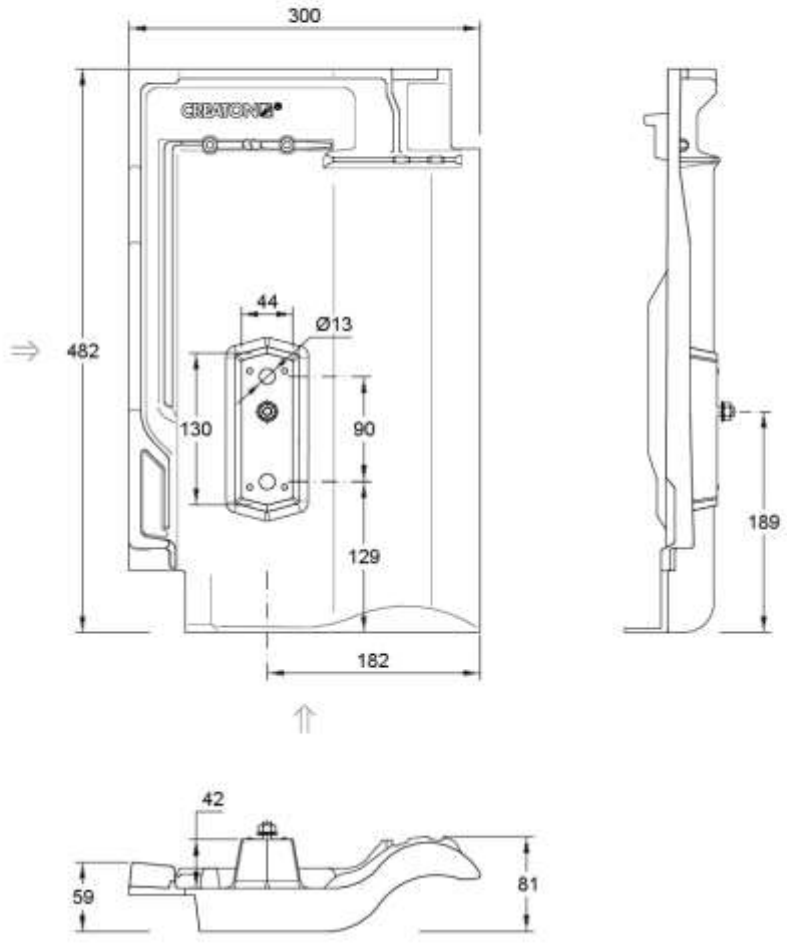
SCALE: 1:5	THIS DRAWING IS PROTECTED BY COPYRIGHT AND PROPERTY OF
SIZE: DIN-A4	CREATON  CREATON GmbH Dillinger Straße 60 D-86637 Wertingen
DIM IN: mm	AND MUST NOT BE COPIED OR DISCLOSED TO A THIRD PARTY WITHOUT PRIOR CONSENT OF THE OWNER
CREATED: 27.10.2020 Rb	Diese Zeichnung ist urheberrechtlich geschützt und Eigentum der CREATON GmbH. Sie darf nicht ohne Zustimmung des Eigentümers kopiert oder an Dritte weitergegeben werden!
INDEX: -	TITLE: "CANTUS" ALU-GRUNDELEMENT
Material: Alu-Guß, Legierung 231 K / EN AC-AI Si12 (Cu) Toleranzen: DIN1688 GTA 15	



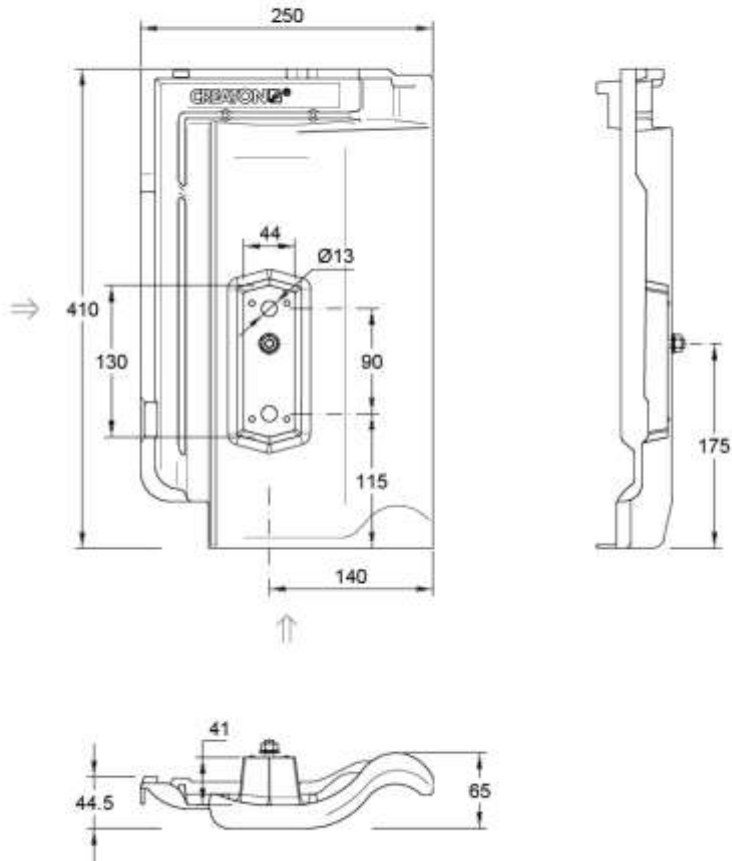
SCALE: 1:5	THIS DRAWING IS PROTECTED BY COPYRIGHT AND PROPERTY OF	
SIZE: DIN-A4		CREATON GmbH
DWG IN: mm		Dillinger Straße 60 D-86637 Wertingen
CREATED: 10.09.2020 Rb	AND MUST NOT BE COPIED OR DISCLOSED TO A THIRD PARTY WITHOUT PRIOR CONSENT OF THE OWNER	Diese Zeichnung ist urheberrechtlich geschützt und Eigentum der CREATON GmbH. Sie darf nicht ohne Zustimmung des Eigentümers kopiert oder an Dritte weitergegeben werden!
INDEX: -	TITLE:	"DOMINO" ALU-GRUNDELEMENT
Material: Alu-Guß, Legierung 231 K / EN AC-AI Si12 (Cu) Toleranzen: DIN1688 GTA 15		




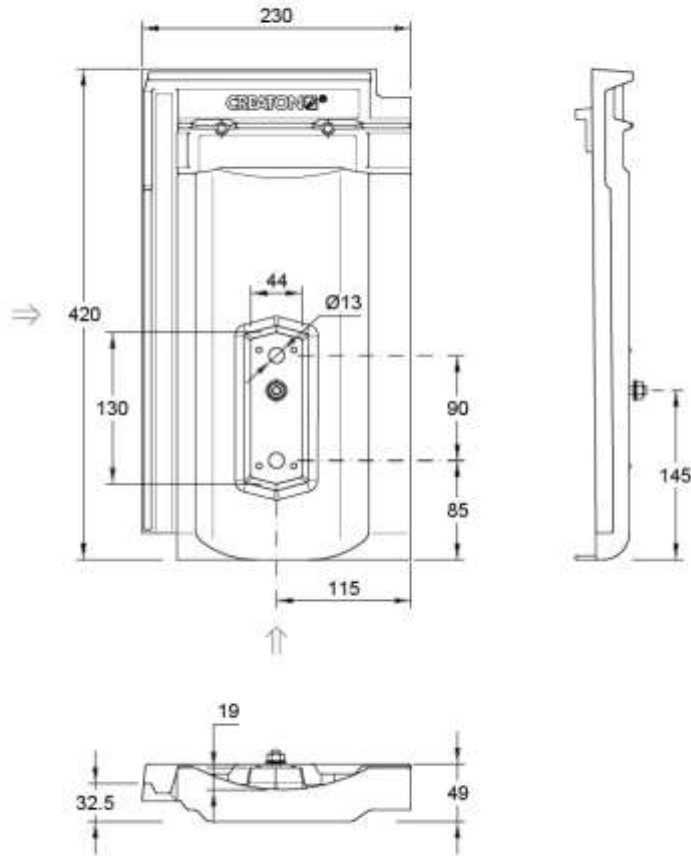
SCALE: 1:5	THIS DRAWING IS PROTECTED BY COPYRIGHT AND PROPERTY OF	
SIZE: DIN-A4		CREATON GmbH
DIM IN: mm		Dillinger Straße 60 D-86637 Wertingen
CREATED: 10.09.2020 Rb	AND MUST NOT BE COPIED OR DISCLOSED TO A THIRD PARTY WITHOUT PRIOR CONSENT OF THE OWNER	Diese Zeichnung ist urheberrechtlich geschützt und Eigentum der CREATON GmbH. Sie darf nicht ohne Zustimmung des Eigentümers kopiert oder an Dritte weitergegeben werden!
INDEX: -	TITLE: "ELEGANZ" ALU-GRUNDELEMENT	
Material: Alu-Guß, Legierung 231 K / EN AC-AI Si12 (Cu) Toleranzen: DIN1688 GTA 15		



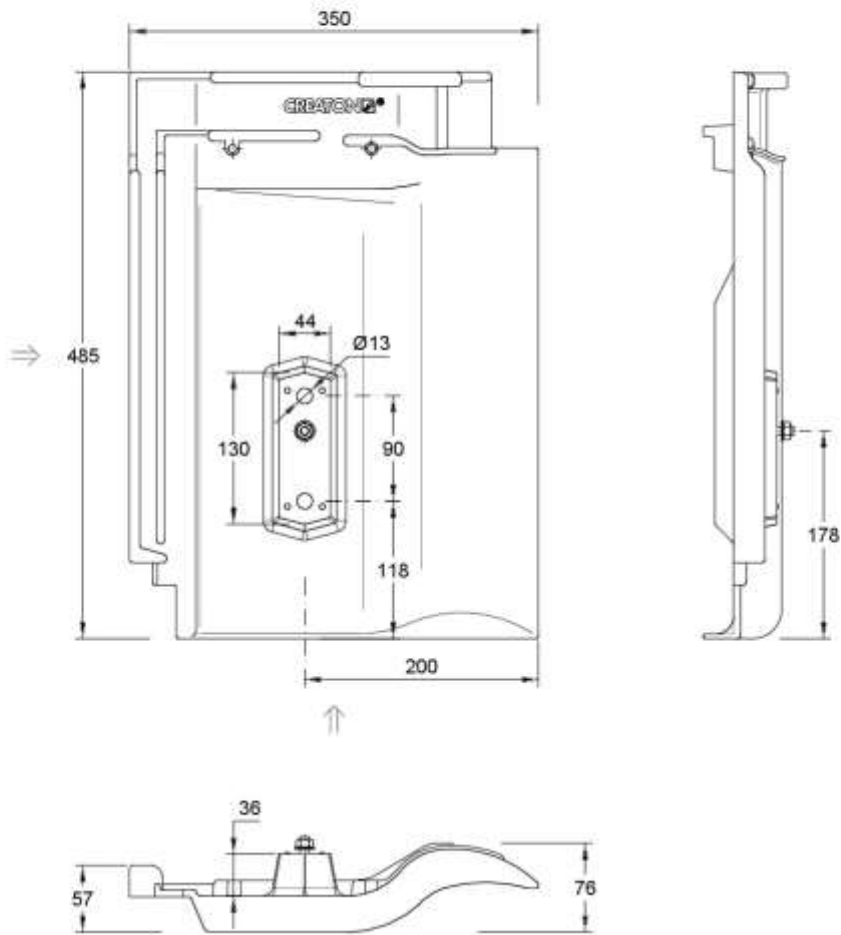
SCALE: 1:5	THIS DRAWING IS PROTECTED BY COPYRIGHT AND PROPERTY OF	
SIZE: DIN-A4		CREATON GmbH
DWG IN: mm		Dillinger Straße 60 D-86637 Wertingen
CREATED: 10.09.2020 Rb	AND MUST NOT BE COPIED OR DISCLOSED TO A THIRD PARTY WITHOUT PRIOR CONSENT OF THE OWNER	Diese Zeichnung ist urheberrechtlich geschützt und Eigentum der CREATON GmbH. Sie darf nicht ohne Zustimmung des Eigentümers kopiert oder an Dritte weitergegeben werden!
INDEX: -	TITLE: "FUTURA" ALU-GRUNDELEMENT	
Material: Alu-Guß, Legierung 231 K / EN AC-AI Si12 (Cu) Toleranzen: DIN1688 GTA 15		



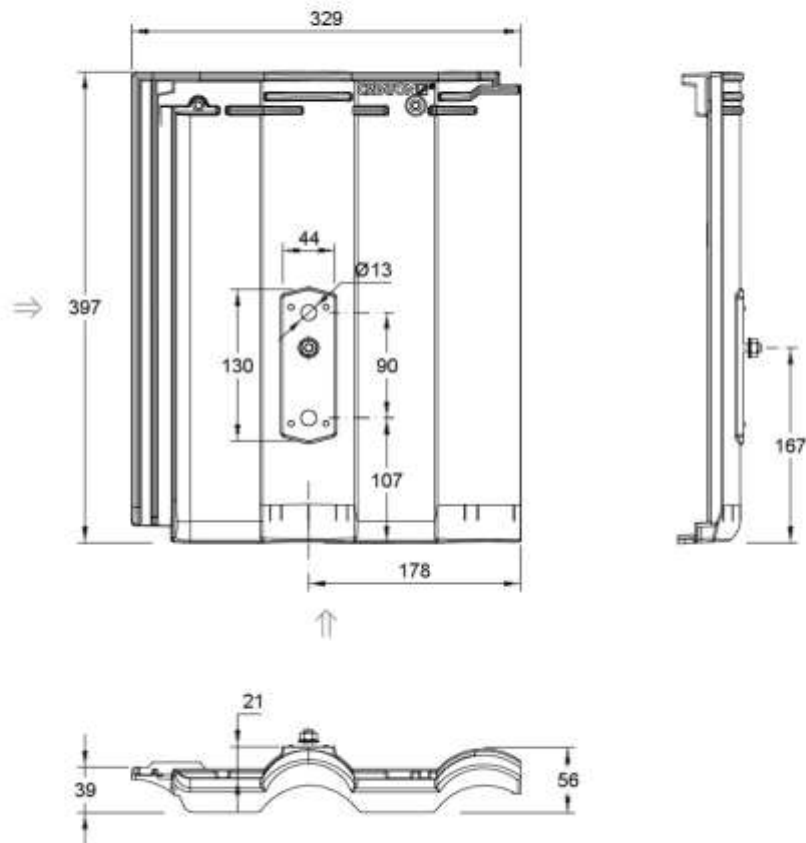
SCALE: 1:5	THIS DRAWING IS PROTECTED BY COPYRIGHT AND PROPERTY OF	
SIZE: DIN-A4		CREATON GmbH
DIM IN: mm		Dillinger Straße 60 D-86637 Wertingen
CREATED: 10.09.2020 Rb	AND MUST NOT BE COPIED OR DISCLOSED TO A THIRD PARTY WITHOUT PRIOR CONSENT OF THE OWNER	Diese Zeichnung ist urheberrechtlich geschützt und Eigentum der CREATON GmbH. Sie darf nicht ohne Zustimmung des Eigentümers kopiert oder an Dritte weitergegeben werden!
INDEX: -	TITLE: "HARMONIE" ALU-GRUNDELEMENT	
Material: Alu-Guß, Legierung 231 K / EN AC-AI Si12 (Cu) Toleranzen: DIN1688 GTA 15		



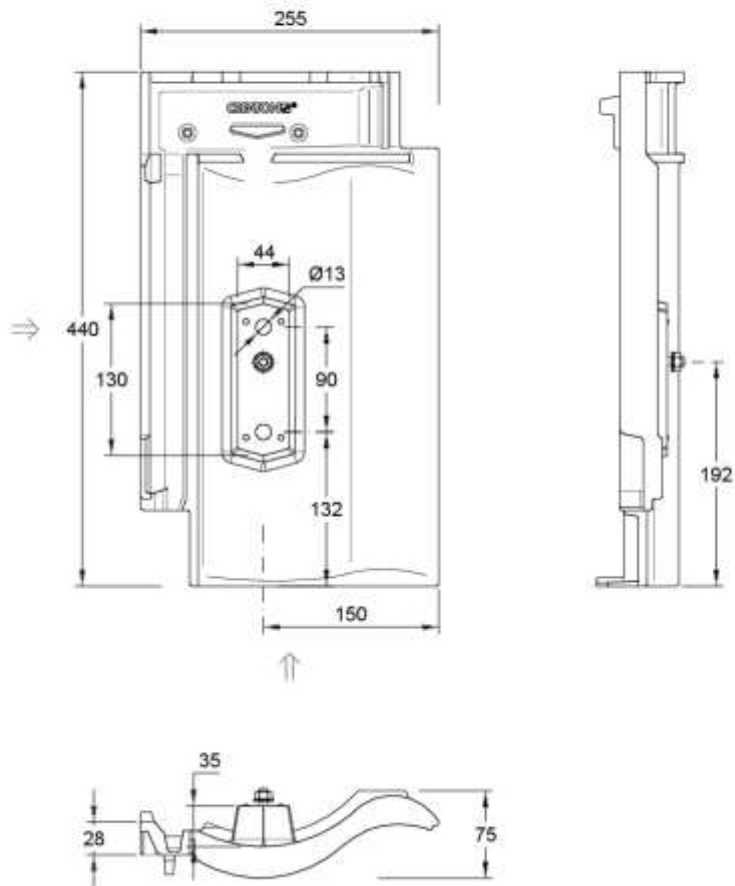
SCALE: 1:5	THIS DRAWING IS PROTECTED BY COPYRIGHT AND PROPERTY OF	
SIZE: DIN-A4		CREATON GmbH Dillinger Straße 60 D-86637 Wertingen
DWG IN: mm		
CREATED: 10.09.2020 Rb	<small>Diese Zeichnung ist urheberrechtlich geschützt und Eigentum der CREATON GmbH. Sie darf nicht ohne Zustimmung des Eigentümers kopiert oder an Dritte weitergegeben werden!</small>	
INDEX: -	TITLE: "HERZZIEGEL" ALU-GRUNDELEMENT	
Material: Alu-Guß, Legierung 231 K / EN AC-AI Si12 (Cu) Toleranzen: DIN1688 GTA 15		



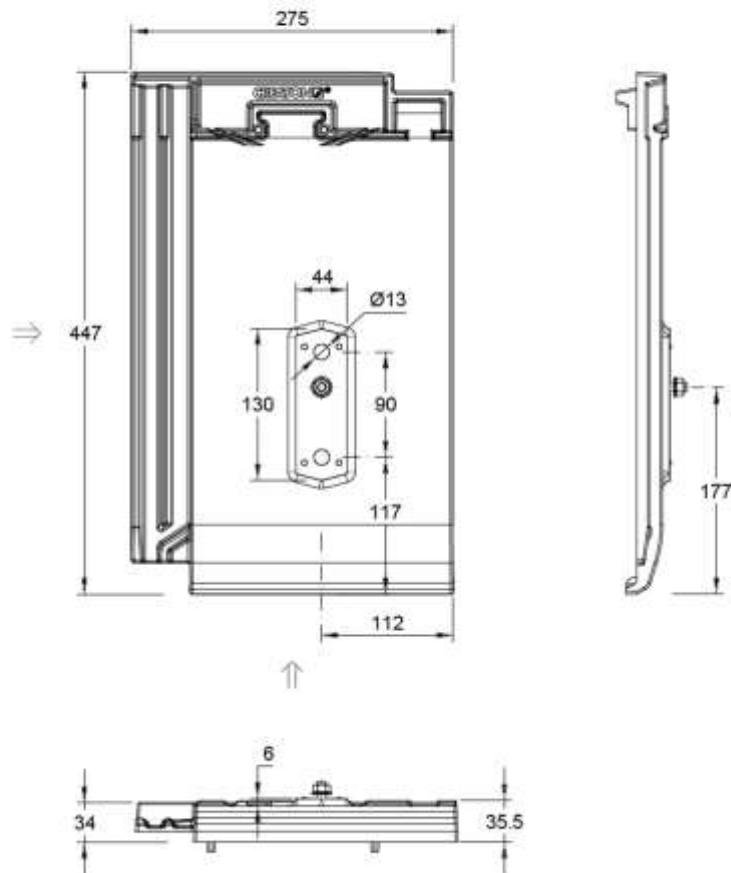
SCALE: 1:5	THIS DRAWING IS PROTECTED BY COPYRIGHT AND PROPERTY OF	
SIZE: DIN-A4		CREATON GmbH
DWG IN: mm		Dillinger Straße 60 D-86637 Wertingen
CREATED: 10.09.2020 Rb	AND MUST NOT BE COPIED OR DISCLOSED TO A THIRD PARTY WITHOUT PRIOR CONSENT OF THE OWNER	Diese Zeichnung ist urheberrechtlich geschützt und Eigentum der CREATON GmbH. Sie darf nicht ohne Zustimmung des Eigentümers kopiert oder an Dritte weitergegeben werden!
INDEX: -	TITLE: "MAGNUM" ALU-GRUNDELEMENT	
Material: Alu-Guß, Legierung 231 K / EN AC-AI Si12 (Cu) Toleranzen: DIN1688 GTA 15		




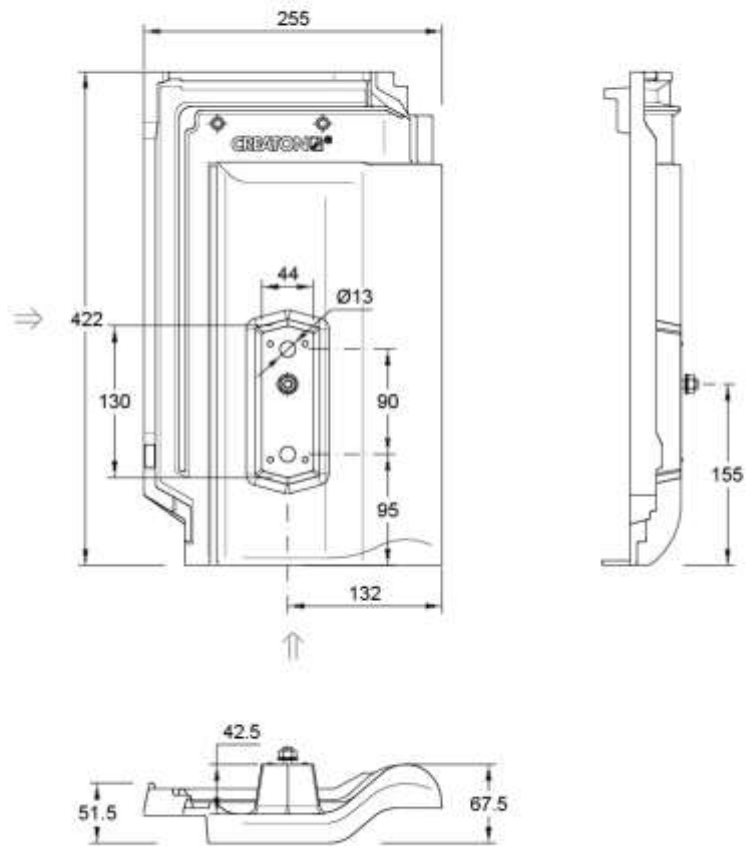
SCALE: 1:5	THIS DRAWING IS PROTECTED BY COPYRIGHT AND PROPERTY OF	
SIZE: DIN-A4		CREATON GmbH
DWG IN: mm		Dillinger Straße 60 D-86637 Wertingen
CREATED: 10.09.2020 Rb	AND MUST NOT BE COPIED OR DISCLOSED TO A THIRD PARTY WITHOUT PRIOR CONSENT OF THE OWNER	Diese Zeichnung ist urheberrechtlich geschützt und Eigentum der CREATON GmbH. Sie darf nicht ohne Zustimmung des Eigentümers kopiert oder an Dritte weitergegeben werden!
INDEX: -	TITLE: "MAXIMA PRO" ALU-GRUNDELEMENT	
Material: Alu-Guß, Legierung 231 K / EN AC-AI Si12 (Cu) Toleranzen: DIN1688 GTA 15		



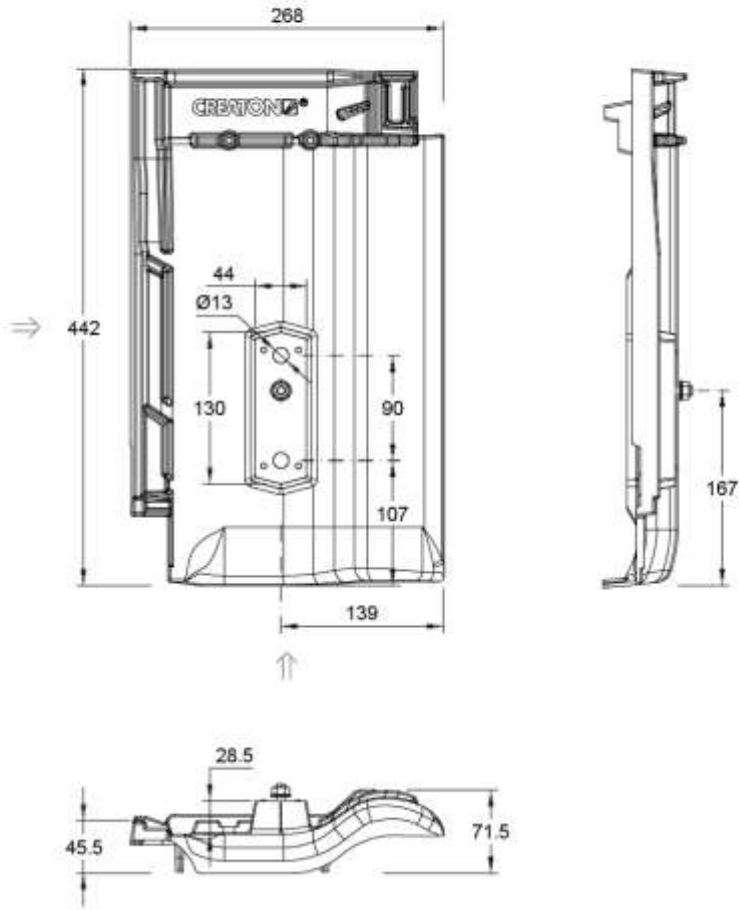
SCALE: 1:5	THIS DRAWING IS PROTECTED BY COPYRIGHT AND PROPERTY OF	
SIZE: DIN-A4		CREATON GmbH Dillinger Straße 60 D-86637 Wertingen
DIM IN: mm		
CREATED: 27.10.2020 Rb	<small>AND MUST NOT BE COPIED OR DISCLOSED TO A THIRD PARTY WITHOUT PRIOR CONSENT OF THE OWNER</small>	<small>Diese Zeichnung ist urheberrechtlich geschützt und Eigentum der CREATON GmbH. Sie darf nicht ohne Zustimmung des Eigentümers kopiert oder an Dritte weitergegeben werden!</small>
INDEX: -	TITLE: "MELODIE" ALU-GRUNDELEMENT	
Material: Alu-Guß, Legierung 231 K / EN AC-AI Si12 (Cu) Toleranzen: DIN1688 GTA 15		




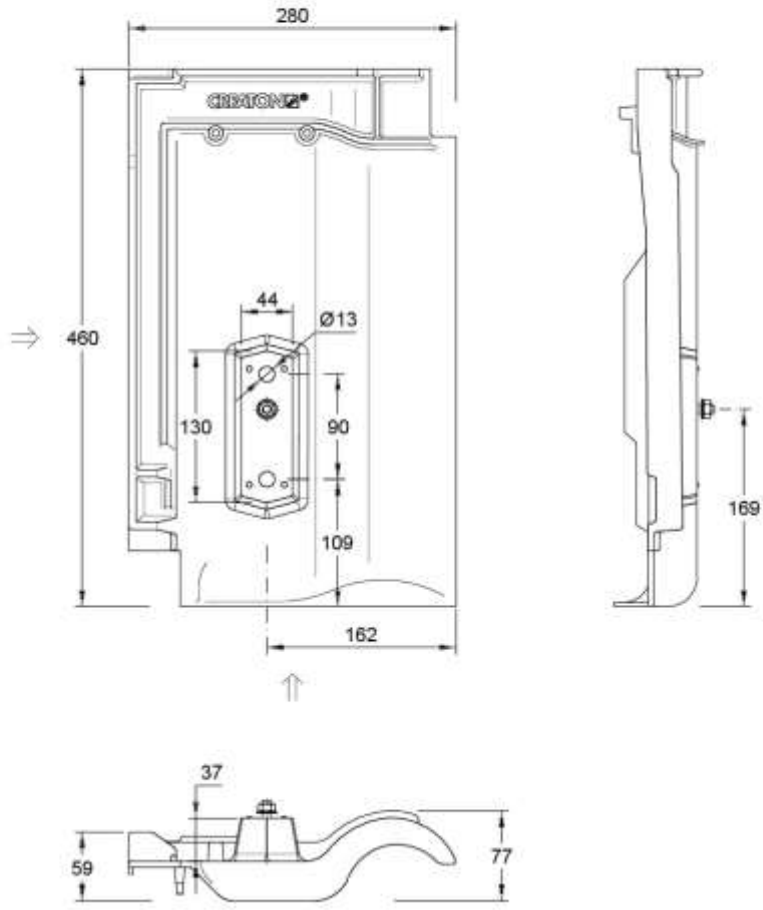
SCALE: 1:5	THIS DRAWING IS PROTECTED BY COPYRIGHT AND PROPERTY OF	
SIZE: DIN-A4		CREATON GmbH Dillinger Straße 60 D-86637 Wertingen
DIM IN: mm		
CREATED: 10.09.2020 Rb	<small>Diese Zeichnung ist urheberrechtlich geschützt und Eigentum der CREATON GmbH. Sie darf nicht ohne Zustimmung des Eigentümers kopiert oder an Dritte weitergegeben werden!</small>	
INDEX: -	TITLE: "MIKADO" ALU-GRUNDELEMENT	
Material: Alu-Guß, Legierung 231 K / EN AC-AI Si12 (Cu) Toleranzen: DIN1688 GTA 15		



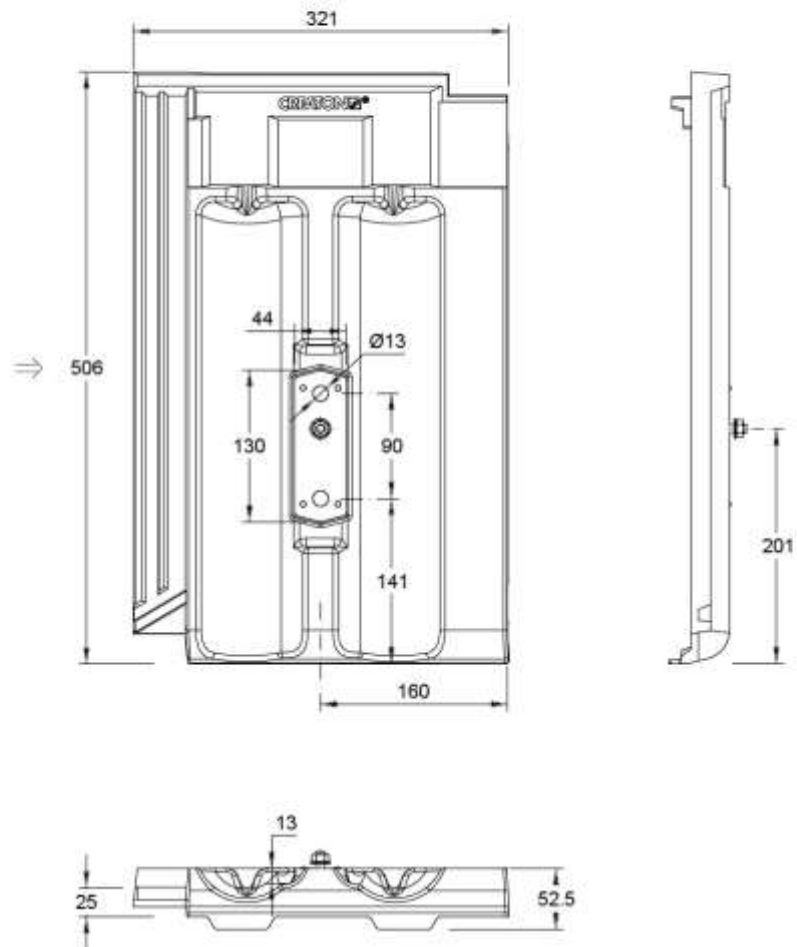
SCALE: 1:5	THIS DRAWING IS PROTECTED BY COPYRIGHT AND PROPERTY OF	
SIZE: DIN-A4		CREATON GmbH
DIM IN: mm		Dillinger Straße 60 D-86637 Wertingen
CREATED: 10.09.2020 Rb	AND MUST NOT BE COPIED OR DISCLOSED TO A THIRD PARTY WITHOUT PRIOR CONSENT OF THE OWNER	<small>Diese Zeichnung ist urheberrechtlich geschützt und Eigentum der CREATON GmbH. Sie darf nicht ohne Zustimmung des Eigentümers kopiert oder an Dritte weitergegeben werden!</small>
INDEX: -	TITLE:	"MZ3 Klassik" ALU-GRUNDELEMENT
Material: Alu-Guß, Legierung 231 K / EN AC-AI Si12 (Cu) Toleranzen: DIN1688 GTA 15		




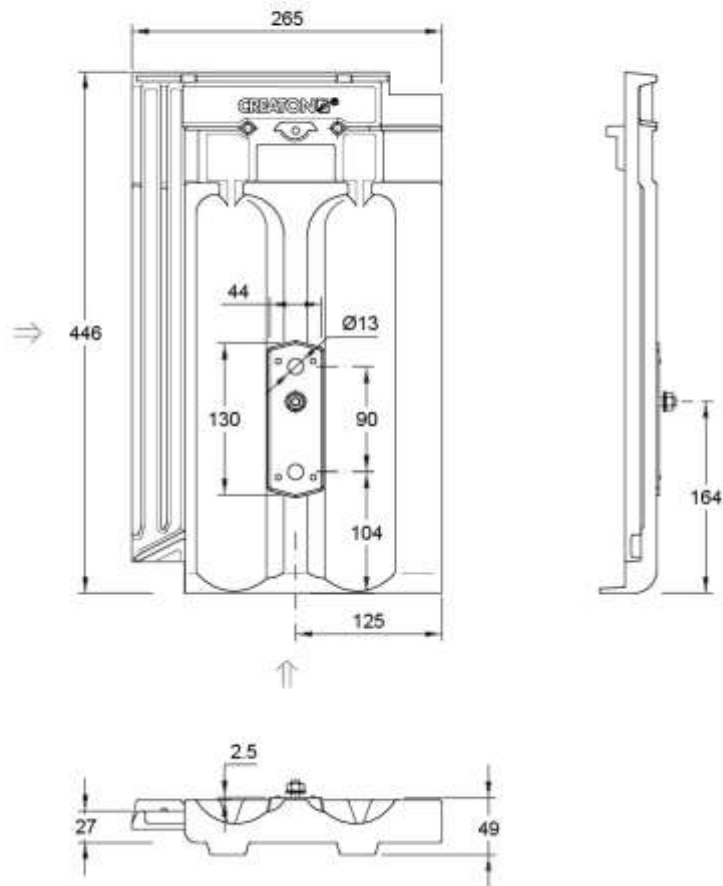
SCALE: 1:5	THIS DRAWING IS PROTECTED BY COPYRIGHT AND PROPERTY OF	
SIZE: DIN-A4		CREATON GmbH
DWG IN: mm		Dillinger Straße 60 D-86637 Wertingen
CREATED: 10.09.2020 Rb	AND MUST NOT BE COPIED OR DISCLOSED TO A THIRD PARTY WITHOUT PRIOR CONSENT OF THE OWNER	<small>Diese Zeichnung ist urheberrechtlich geschützt und Eigentum der CREATON GmbH. Sie darf nicht ohne Zustimmung des Eigentümers kopiert oder an Dritte weitergegeben werden!</small>
INDEX: -	TITLE:	"MZ3" ALU-GRUNDELEMENT
Material: Alu-Guß, Legierung 231 K / EN AC-AI Si12 (Cu) Toleranzen: DIN1688 GTA 15		




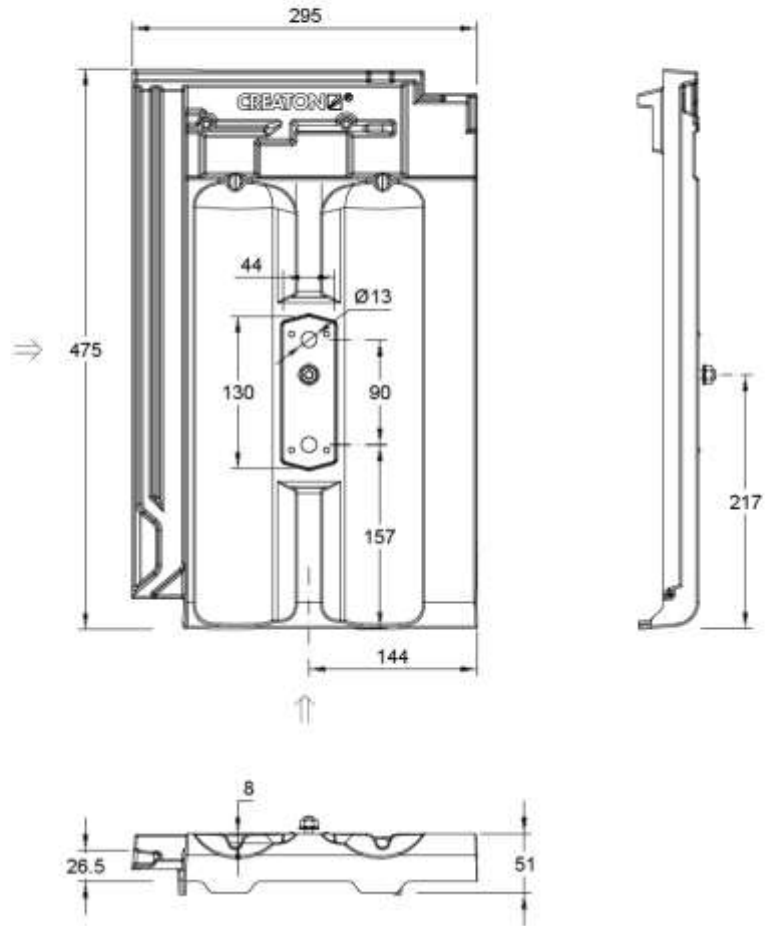
SCALE: 1:5	THIS DRAWING IS PROTECTED BY COPYRIGHT AND PROPERTY OF	
SIZE: DIN-A4		CREATON GmbH
DWG IN: mm		Dillinger Straße 60 D-86637 Wertingen
CREATED: 10.09.2020 Rb	AND MUST NOT BE COPIED OR DISCLOSED TO A THIRD PARTY WITHOUT PRIOR CONSENT OF THE OWNER	<small>Diese Zeichnung ist urheberrechtlich geschützt und Eigentum der CREATON GmbH. Sie darf nicht ohne Zustimmung des Eigentümers kopiert oder an Dritte weitergegeben werden!</small>
INDEX: -	TITLE: "PREMIUM" ALU-GRUNDELEMENT	
Material: Alu-Guß, Legierung 231 K / EN AC-AI Si12 (Cu) Toleranzen: DIN1688 GTA 15		



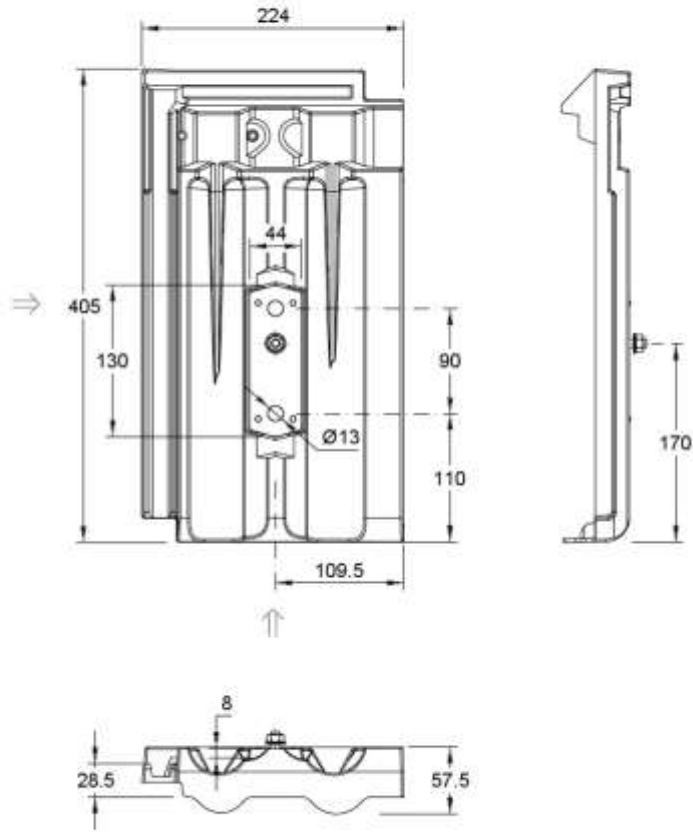
SCALE: 1:5	THIS DRAWING IS PROTECTED BY COPYRIGHT AND PROPERTY OF	
SIZE: DIN-A4		CREATON GmbH
DWG IN: mm		Dillinger Straße 60 D-86637 Wertingen
CREATED: 10.09.2020 Rb	AND MUST NOT BE COPIED OR DISCLOSED TO A THIRD PARTY WITHOUT PRIOR CONSENT OF THE OWNER	Diese Zeichnung ist urheberrechtlich geschützt und Eigentum der CREATON GmbH. Sie darf nicht ohne Zustimmung des Eigentümers kopiert oder an Dritte weitergegeben werden!
INDEX: -	TITLE:	"RAPIDO" ALU-GRUNDELEMENT
Material: Alu-Guß, Legierung 231 K / EN AC-AI Si12 (Cu) Toleranzen: DIN1688 GTA 15		



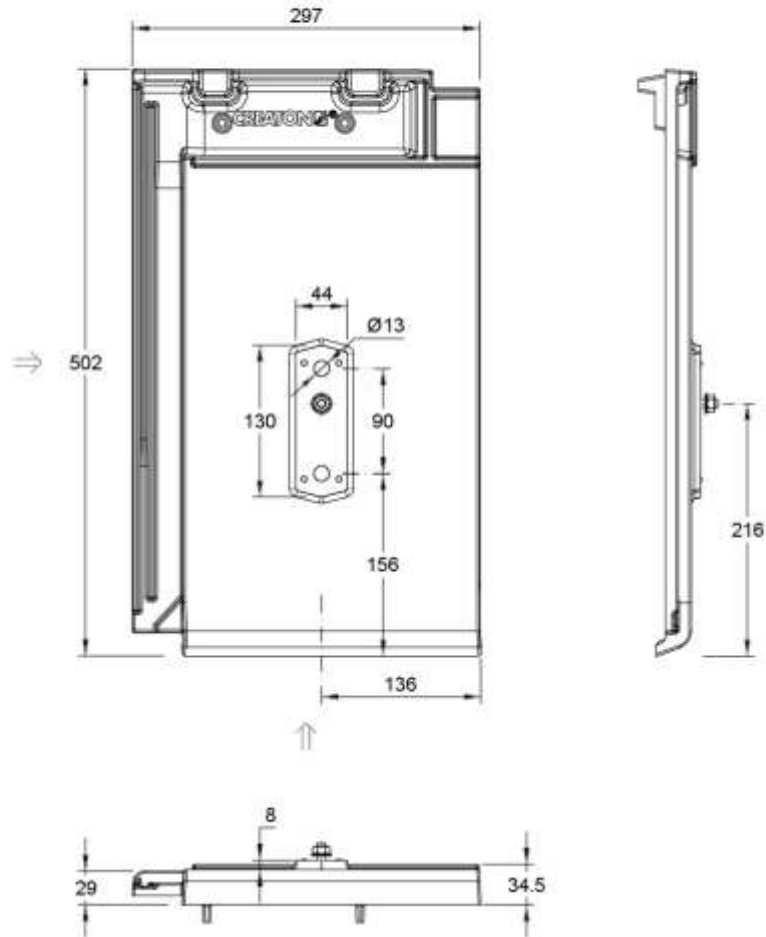
SCALE: 1:5	THIS DRAWING IS PROTECTED BY COPYRIGHT AND PROPERTY OF	
SIZE: DIN-A4		CREATON GmbH
DWG IN: mm		Dillinger Straße 60 D-86637 Wertingen
CREATED: 10.09.2020 Rb	AND MUST NOT BE COPIED OR DISCLOSED TO A THIRD PARTY WITHOUT PRIOR CONSENT OF THE OWNER	Diese Zeichnung ist urheberrechtlich geschützt und Eigentum der CREATON GmbH. Sie darf nicht ohne Zustimmung des Eigentümers kopiert oder an Dritte weitergegeben werden!
INDEX: -	TITLE:	"RATIO" ALU-GRUNDELEMENT
Material: Alu-Guß, Legierung 231 K / EN AC-AI Si12 (Cu) Toleranzen: DIN1688 GTA 15		




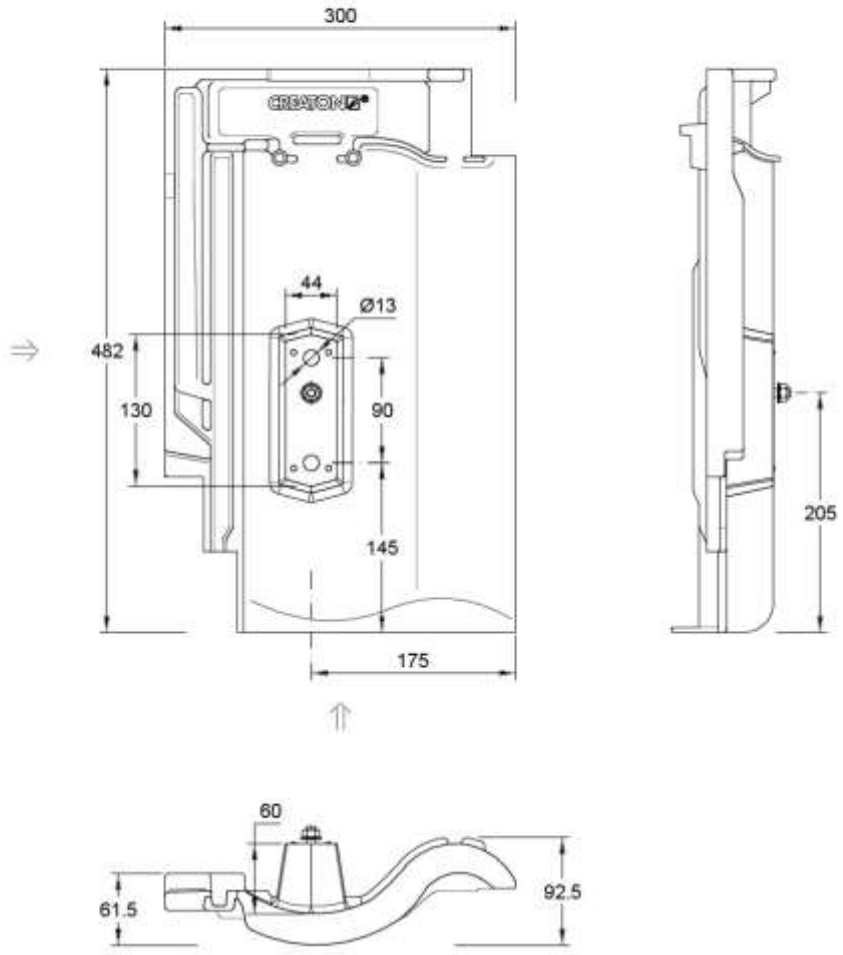
SCALE: 1:5	THIS DRAWING IS PROTECTED BY COPYRIGHT AND PROPERTY OF	
SIZE: DIN-A4		CREATON GmbH
DWG IN: mm		Dillinger Straße 60 D-86637 Wertingen
CREATED: 10.09.2020 Rb	AND MUST NOT BE COPIED OR DISCLOSED TO A THIRD PARTY WITHOUT PRIOR CONSENT OF THE OWNER	<small>Diese Zeichnung ist urheberrechtlich geschützt und Eigentum der CREATON GmbH. Sie darf nicht ohne Zustimmung des Eigentümers kopiert oder an Dritte weitergegeben werden!</small>
INDEX: -	TITLE:	"REGIUS" ALU-GRUNDELEMENT
Material: Alu-Guß, Legierung 231 K / EN AC-AI Si12 (Cu) Toleranzen: DIN1688 GTA 15		




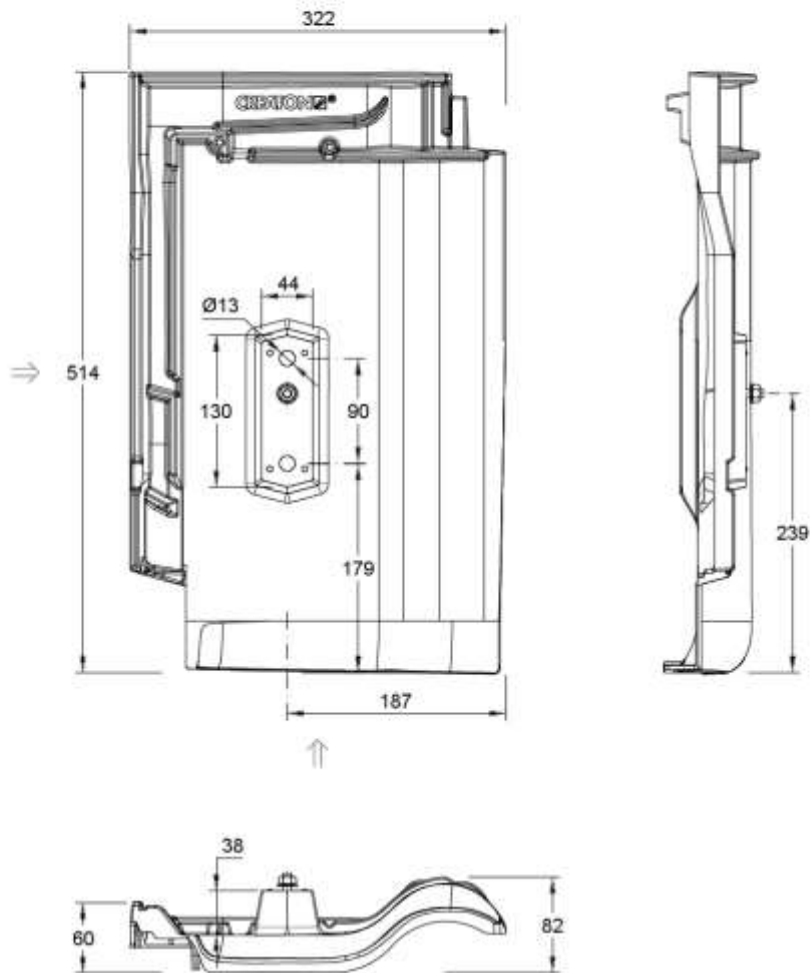
SCALE: 1:5	THIS DRAWING IS PROTECTED BY COPYRIGHT AND PROPERTY OF	
SIZE: DIN-A4	CREATON	CREATON GmbH
DIM IN: mm		Dillinger Straße 60 D-86637 Wertingen
CREATED: 10.09.2020 Rb	AND MUST NOT BE COPIED OR DISCLOSED TO A THIRD PARTY WITHOUT PRIOR CONSENT OF THE OWNER	Diese Zeichnung ist urheberrechtlich geschützt und Eigentum der CREATON GmbH. Sie darf nicht ohne Zustimmung des Eigentümers kopiert oder an Dritte weitergegeben werden!
INDEX: -	TITLE: "RUSTICO" ALU-GRUNDELEMENT	
Material: Alu-Guß, Legierung 231 K / EN AC-AI Si12 (Cu) Toleranzen: DIN1688 GTA 15		




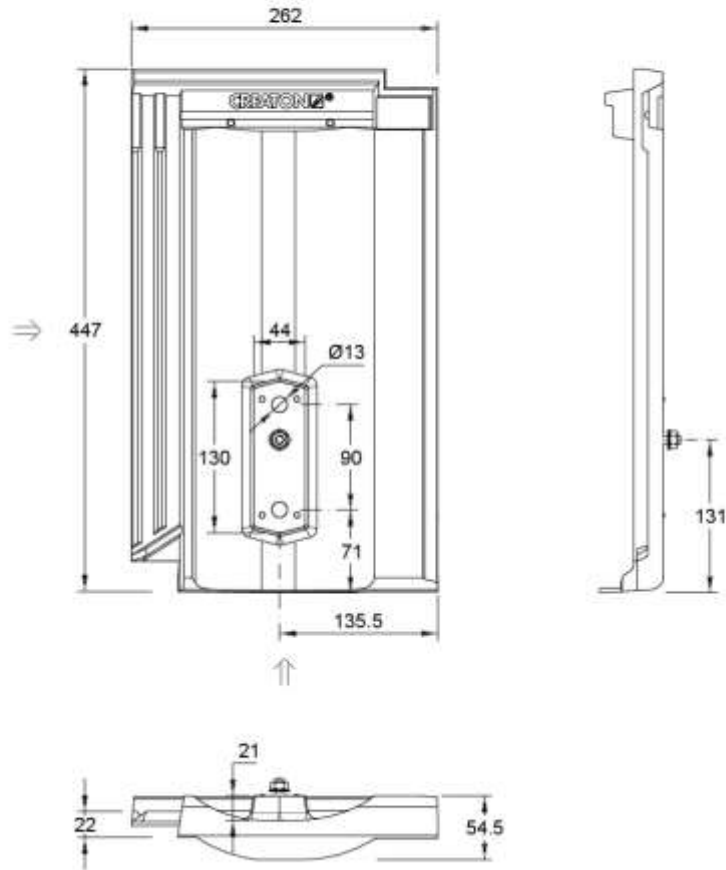
SCALE: 1:5	THIS DRAWING IS PROTECTED BY COPYRIGHT AND PROPERTY OF	
SIZE: DIN-A4		CREATON GmbH
DIM IN: mm		Dillinger Straße 60 D-86637 Wertingen
CREATED: 10.09.2020 Rb	AND MUST NOT BE COPIED OR DISCLOSED TO A THIRD PARTY WITHOUT PRIOR CONSENT OF THE OWNER	Diese Zeichnung ist urheberrechtlich geschützt und Eigentum der CREATON GmbH. Sie darf nicht ohne Zustimmung des Eigentümers kopiert oder an Dritte weitergegeben werden!
INDEX: -	TITLE:	"SIMPLA" ALU-GRUNDELEMENT
Material: Alu-Guß, Legierung 231 K / EN AC-AI Si12 (Cu) Toleranzen: DIN1688 GTA 15		




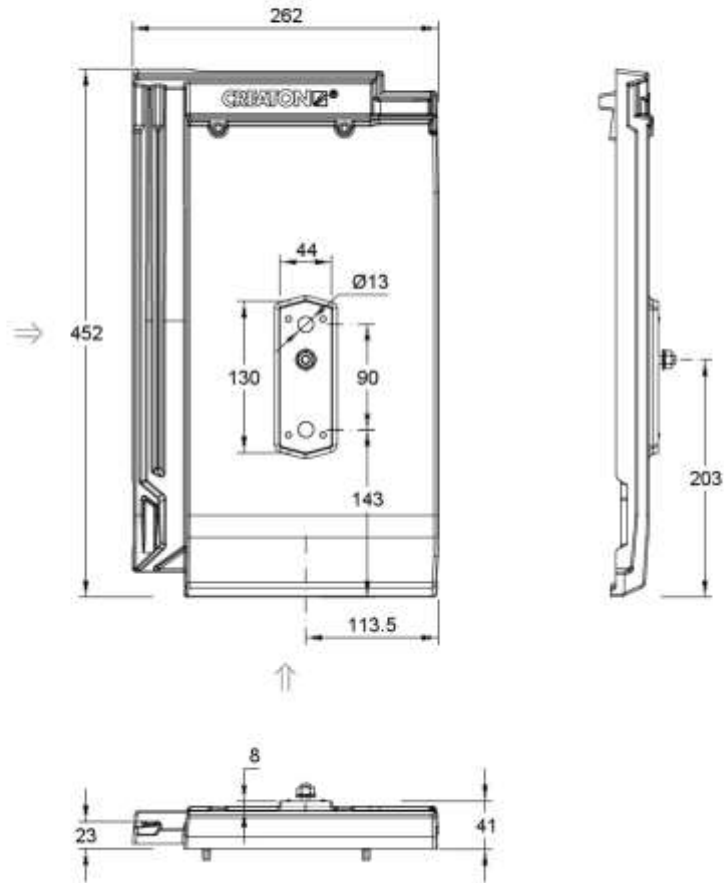
SCALE: 1:5	THIS DRAWING IS PROTECTED BY COPYRIGHT AND PROPERTY OF	
SIZE: DIN-A4		CREATON GmbH
DIM IN: mm		Dillinger Straße 60 D-86637 Wertingen
CREATED: 10.09.2020 Rb	AND MUST NOT BE COPIED OR DISCLOSED TO A THIRD PARTY WITHOUT PRIOR CONSENT OF THE OWNER	Diese Zeichnung ist urheberrechtlich geschützt und Eigentum der CREATON GmbH. Sie darf nicht ohne Zustimmung des Eigentümers kopiert oder an Dritte weitergegeben werden!
INDEX: -	TITLE: "SINFONIE" ALU-GRUNDELEMENT	
Material: Alu-Guß, Legierung 231 K / EN AC-AI Si12 (Cu) Toleranzen: DIN1688 GTA 15		



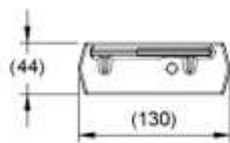
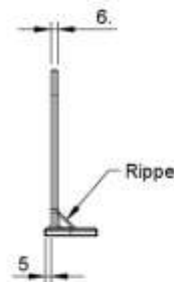
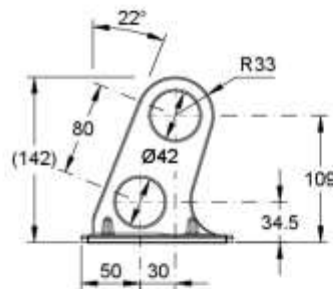
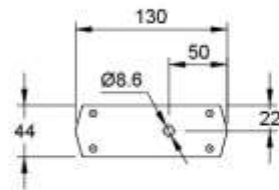
SCALE: 1:5	THIS DRAWING IS PROTECTED BY COPYRIGHT AND PROPERTY OF	
SIZE: DIN-A4		CREATON GmbH
DWG IN: mm		Dillinger Straße 60 D-86637 Wertingen
CREATED: 10.09.2020 Rb	AND MUST NOT BE COPIED OR DISCLOSED TO A THIRD PARTY WITHOUT PRIOR CONSENT OF THE OWNER	<small>Diese Zeichnung ist urheberrechtlich geschützt und Eigentum der CREATON GmbH. Sie darf nicht ohne Zustimmung des Eigentümers kopiert oder an Dritte weitergegeben werden!</small>
INDEX: -	TITLE:	"TITANIA" ALU-GRUNDELEMENT
Material: Alu-Guß, Legierung 231 K / EN AC-AI Si12 (Cu) Toleranzen: DIN1688 GTA 15		



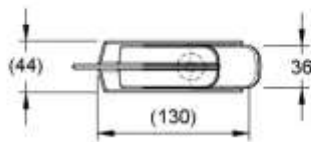
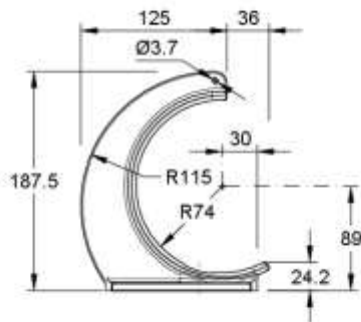
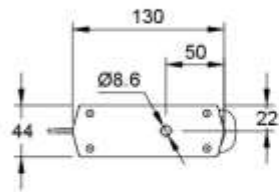
SCALE: 1:5	THIS DRAWING IS PROTECTED BY COPYRIGHT AND PROPERTY OF	
SIZE: DIN-A4		CREATON GmbH
DWG IN: mm		Dillinger Straße 60 D-86637 Wertingen
CREATED: 10.09.2020 Rb	AND MUST NOT BE COPIED OR DISCLOSED TO A THIRD PARTY WITHOUT PRIOR CONSENT OF THE OWNER	Diese Zeichnung ist urheberrechtlich geschützt und Eigentum der CREATON GmbH. Sie darf nicht ohne Zustimmung des Eigentümers kopiert oder an Dritte weitergegeben werden!
INDEX: -	TITLE: "TERRA OPTIMA" ALU-GRUNDELEMENT	
Material: Alu-Guß, Legierung 231 K / EN AC-AI Si12 (Cu) Toleranzen: DIN1688 GTA 15		




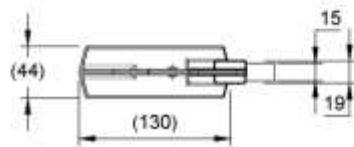
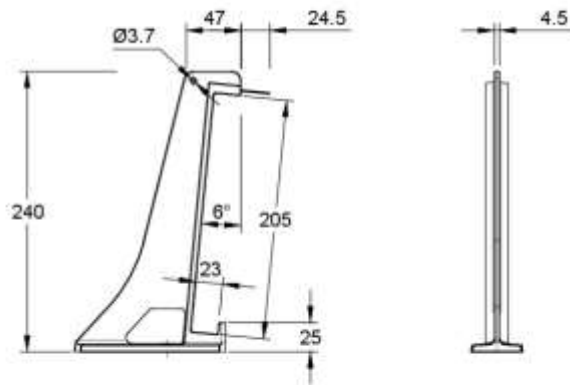
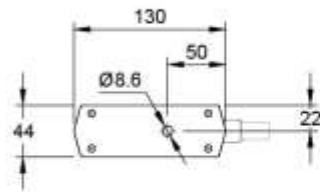
SCALE: 1:5	THIS DRAWING IS PROTECTED BY COPYRIGHT AND PROPERTY OF	
SIZE: DIN-A4		CREATON GmbH
DWG IN: mm		Dillinger Straße 60 D-86637 Wertingen
CREATED: 10.09.2020 Rb	AND MUST NOT BE COPIED OR DISCLOSED TO A THIRD PARTY WITHOUT PRIOR CONSENT OF THE OWNER	Diese Zeichnung ist urheberrechtlich geschützt und Eigentum der CREATON GmbH. Sie darf nicht ohne Zustimmung des Eigentümers kopiert oder an Dritte weitergegeben werden!
INDEX: -	TITLE:	"VISIO" ALU-GRUNDELEMENT
Material: Alu-Guß, Legierung 231 K / EN AC-AI Si12 (Cu) Toleranzen: DIN1688 GTA 15		



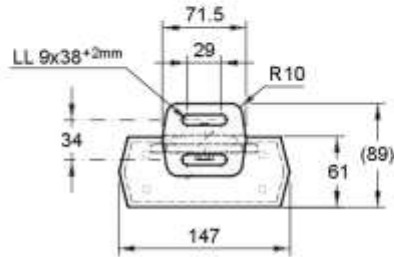
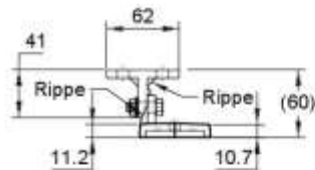
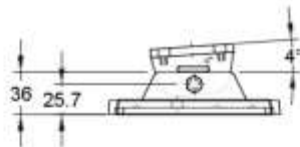
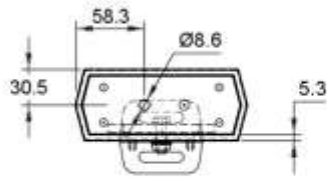
SCALE: 1:5	THIS DRAWING IS PROTECTED BY COPYRIGHT AND PROPERTY OF	
SIZE: DIN-A4		CREATON GmbH Dillinger Straße 60 D-86637 Wertingen
DIM IN: mm		
CREATED: 10.09.2020 Rb	AND MUST NOT BE COPIED OR DISCLOSED TO A THIRD PARTY WITHOUT PRIOR CONSENT OF THE OWNER	Diese Zeichnung ist urheberrechtlich geschützt und Eigentum der CREATON GmbH. Sie darf nicht ohne Zustimmung des Eigentümers kopiert oder an Dritte weitergegeben werden!
INDEX: -	TITLE: System-GEBIRGSSCHNEEFANGSTÜTZE (Doppelrohr)	
Material: Alu-Guß, Legierung Z31 K / EN AC-AI Si12 (Cu) Toleranzen: DIN1688 GTA 15		



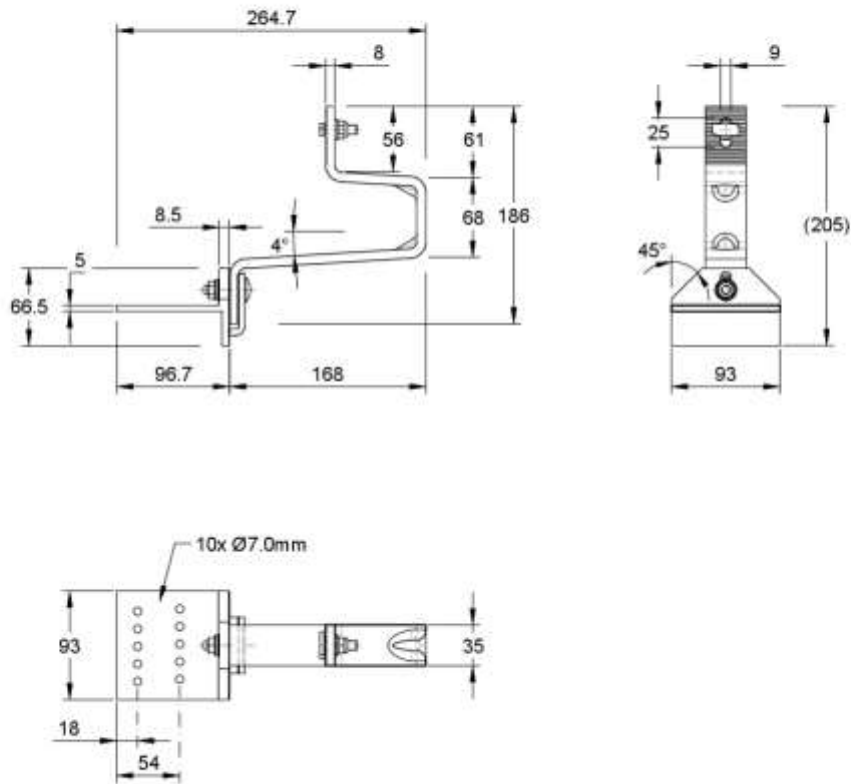
SCALE: 1:5	THIS DRAWING IS PROTECTED BY COPYRIGHT AND PROPERTY OF	
SIZE: DIN-A4		CREATON GmbH Dillinger Straße 60 D-86637 Wertingen
DIM IN: mm		
CREATED: 10.09.2020 Rb	AND MUST NOT BE COPIED OR DISCLOSED TO A THIRD PARTY WITHOUT PRIOR CONSENT OF THE OWNER	<small> Diese Zeichnung ist urheberrechtlich geschützt und Eigentum der CREATON GmbH. Sie darf nicht ohne Zustimmung des Eigentümers kopiert oder an Dritte weitergegeben werden! </small>
INDEX: -	TITLE: System-RUNDHOLZHALTER	
Material: Alu-Guß, Legierung Z31 K / EN AC-AI Si12 (Cu) Toleranzen: DIN1688 GTA 15		



SCALE: 1:5	THIS DRAWING IS PROTECTED BY COPYRIGHT AND PROPERTY OF	
SIZE: DIN-A4	CREATON 	CREATON GmbH
DWG IN: mm		Dillinger Straße 60 D-86637 Wertingen
CREATED: 10.09.2020 Rb	AND MUST NOT BE COPIED OR DISCLOSED TO A THIRD PARTY WITHOUT PRIOR CONSENT OF THE OWNER	Diese Zeichnung ist urheberrechtlich geschützt und Eigentum der CREATON GmbH. Sie darf nicht ohne Zustimmung des Eigentümers kopiert oder an Dritte weitergegeben werden!
INDEX: -	TITLE:	System- SCHNEEFANGGITTERSTÜTZE
Material: Alu-Guß, Legierung 231 K / EN AC-AI Si12 (Cu) Toleranzen: DIN1688 GTA 15		



SCALE: 1:5	THIS DRAWING IS PROTECTED BY COPYRIGHT AND PROPERTY OF	
SIZE: DIN-A4		CREATON GmbH
DWG IN: mm		Dillinger Straße 60
CREATED: 11.12.2020 Rb	AND MUST NOT BE COPIED OR DISCLOSED TO A THIRD PARTY WITHOUT PRIOR CONSENT OF THE OWNER	D-86637 Wertingen
INDEX: -	TITLE:	Diese Zeichnung ist urheberrechtlich geschützt und Eigentum der CREATON GmbH. Sie darf nicht ohne Zustimmung des Eigentümers kopiert oder an Dritte weitergegeben werden!
		SOLARELEMENT-HALTER
Material: Alu-Guß, Legierung 231 K / EN AC-AI Si12 (Cu) Toleranzen: DIN1688 GTA 15		



SCALE: 1:5	THIS DRAWING IS PROTECTED BY COPYRIGHT AND PROPERTY OF	
SIZE: DIN-A4	 CREATON GmbH Dillinger Straße 60 D-68637 Wertingen	<small> Diese Zeichnung ist urheberrechtlich geschützt und Eigentum der CREATON GmbH. Sie darf nicht ohne Zustimmung des Eigentümers kopiert oder an Dritte weitergegeben werden. </small>
UNIT: mm		
CREATED: 25.11.2020 Rs	<small> AND MUST NOT BE COPIED OR DISCLOSED TO A THIRD PARTY WITHOUT PRIOR CONSENT OF THE OWNER </small>	<small> TITLE: </small>
INDEX: -	SOLARHALTER	
Material: Grundplatte EN AW-6063 T6 Toleranzen: DIN ISO 2768-1 m Schenkel hybrid S235, Korrosionsschutz nach DIN EN ISO 12944-5 C4 lang		